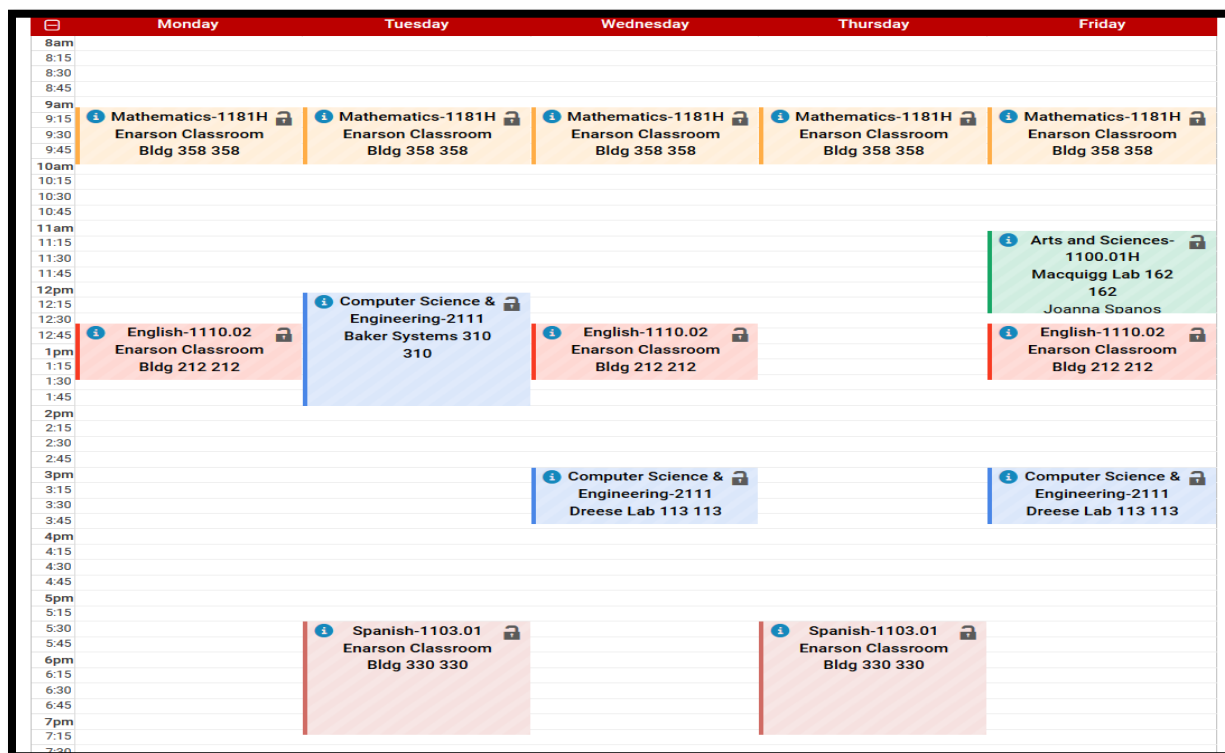


## Sample Schedule for Honors Students Majoring in Integrated Major in Mathematics and English

*Note: This schedule is only an example and your personal schedule will likely be different. Advisors will work with students at orientation to craft a schedule based on their academic record and degree plan. Please also note that a typical schedule for an Arts and Sciences Honors student consists of 14-16 credit hours per semester.*



- ARTS AND SCIENCES 1100.01H:** College Survey (1 credit hour)
  - Provides students with an in-depth understanding of degree planning, the General Education curriculum, your major, the Honors Program, University policies and procedures, and campus resources

2. **MATH:**

If you have:	Register for:
Placement Level N	<b>Math 1148</b> (4 credit hours)
Placement Level M	<b>Math 1150</b> (5 credit hours)
Placement Level L	Consult with Math Advisors
Credit for Math 1151	Consult with Math Advisors
Credit for Math 1152	Consult with Math Advisors

- FOREIGN LANGUAGE:** Various (5 credit hours)
  - Especially recommended if pursuing the foreign language you studied in high school
- ENGLISH 1110.01(H) or 1110.02(H):** First-Year English Composition (3 credit hours)
  - Required for all students at the University
  - Serves as a pre-requisite for many major, minor, and General Education courses
- COMPUTER SCIENCE AND ENGINEERING 2111:** Spreadsheets and Databases (3 credit hours)
  - Departmental recommendation for incoming students



It is possible you will already have credit for one or more of the recommended courses through [Advanced Placement \(AP\)](#), [International Baccalaureate \(IB\)](#), or [prior college coursework](#). In that case, your advisor may suggest one or more of the following for your first semester:

- **General Education Courses:** In addition to the courses listed above, every student is required to take some [general education coursework](#) in the natural sciences, social sciences, arts, and humanities. Some common courses for first semester students include, but are not limited to:
  - Anthropology 2200H - Introduction to Physical Anthropology
  - Anthropology 2201H - Introduction to Archaeology
  - Anthropology 2202H – Introduction to Cultural Anthropology
  - Classics 2201H – Classical Civilization: Greece
  - Classics 2202H – Classical Civilization: Rome
  - Classics 2220H – Classical Mythology
  - English 2261H – Introduction to Fiction
  - Linguistics 2000H – Introduction to Language and the Humanities
  - Philosophy 1100H – Introduction to Philosophy
  - Psychology 1100H – Introduction to Psychology
  - Sociology 1101H – Introduction to Sociology
  - Theatre 2100H – Introduction to Theatre
- **First Year Seminar Courses:** [First Year Seminars](#) are 1-2 credit hour classes on special topics and are offered only to first-year students. These seminars, which have a maximum class size of eighteen students and are taught by Ohio State faculty members, give students an opportunity to learn about the professor's specific research interests and engage in open discussion about the class topic.
- **Music, Dance, or Physical Education Courses:** You may be interested in taking an optional elective course during autumn semester. Information on elective options, which might include music, dance, or physical education, will be available during the scheduling session on Day One of orientation.
- **ROTC (Reserve Officer Training Corps):** If you are a member of the ROTC military program on campus, you will be required to take some additional coursework. These requirements vary by military branch and more information will be provided at orientation.

*If you are pursuing a pre-professional program such as pre-med, pre-veterinary, pre-dental, etc., or if you intend to have more than one major, your schedule may vary accordingly. For example, we recommend that pre-health students take General Chemistry in the first year or as soon as your math placement allows. Advisors at orientation will help you to determine what classes should be a priority for you.*



### Preparing for Orientation: A Checklist

In order to make the most of your time at orientation, it is important that you come prepared. As such, you should complete the following items PRIOR to arriving for orientation:

- Complete your Math Placement Exam.** This should be done at least 3 business days prior to your orientation program and will help determine the appropriate first math course for you to take at Ohio State. Instructions for completing your placement exam can be found [here](#). **Please take the exam even if you expect to have Advanced Placement (AP), International Baccalaureate (IB), or transfer credit for math**, as this information may not be available prior to your orientation session. Taking the exam will allow us to make an educated decision about how you should schedule until we can verify your test scores or transfer credit.
- Prepare for your Language Placement Exam.** Most students will be required to take a placement exam during orientation in the language that you used to satisfy Ohio State's foreign language admission requirement. It may be helpful to review the language in preparation for your placement exam, particularly if it has been some time since you last studied/used it. More information about language placement testing can be found [here](#). You may not need to take the exam if you already have an AP score of 3 or higher, an IB score of 4 or higher in the Higher Level (HL) programs (no credit is awarded for Standard Level, or SL, scores), or college credit for foreign language.
- Gather your materials and complete the Earned Credit Worksheet.** Collect your transcripts for any college-level courses (College Credit Plus, dual enrollment, etc.) and/or any official AP and IB test scores and have these documents ready to bring to orientation. It is likely that these credits will not be posted to your Ohio State record by the time you arrive, so having hard copies will help you and our advisors have a better idea of the types of courses for which you are eligible to schedule. Fill out the [Earned Credit Worksheet](#) to consolidate this information into one place. Also, be sure to send any college-level transcripts directly to Undergraduate Admissions. More information for sending transcripts can be found [here](#).
- Complete your Financial Responsibility Statement.** This is a quick online process that can be completed using your To-Do List at [buckeyelink.osu.edu](http://buckeyelink.osu.edu). You will not be able to register for autumn semester courses at orientation until this has been completed.
- Review the Arts and Sciences [Honors Pre-Orientation webpage](#)** for more information on what to expect at orientation, scheduling for autumn semester, etc.

**Write down any questions you have** and bring them with you to orientation. Our advisors will be available then to help answer your questions.